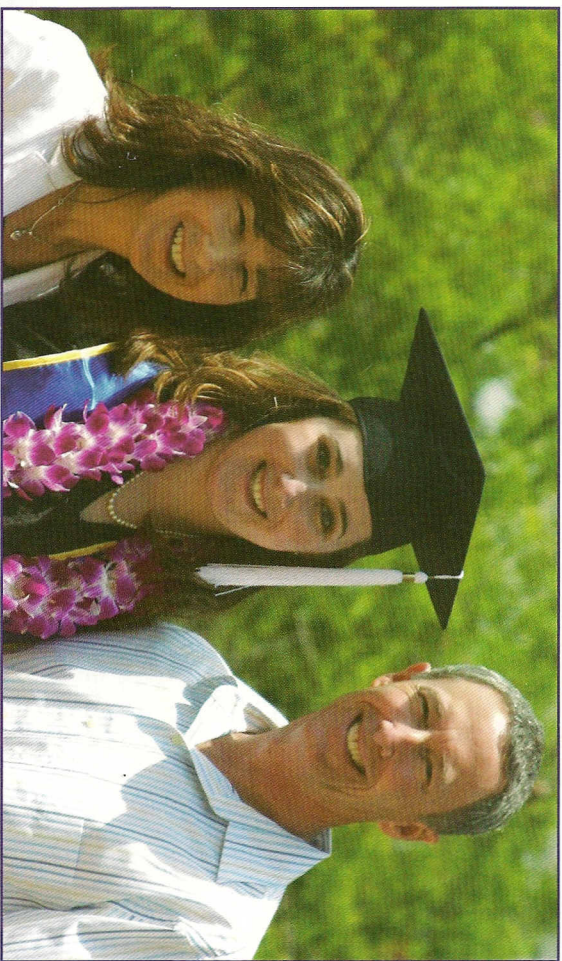


# Candidate for Roseville City Council



## Vote Tuesday, November 2

### Vote Tim Herman

## Roseville City Council

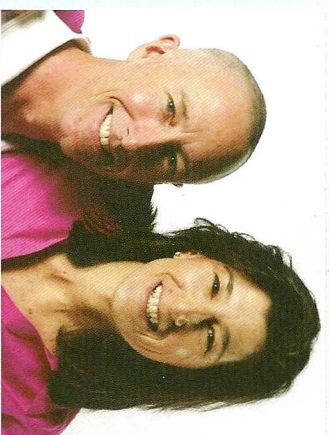
Contact Tim

2236 Bel Air Lane

Roseville, CA 95678

(916) 217-2458

[www.VoteTimHerman.com](http://www.VoteTimHerman.com)



# Vote Tim Herman

[www.VoteTimHerman.com](http://www.VoteTimHerman.com)

Tim and Pam, St. Baldrick's head shaving. Tim and his team raised over \$15,000 to fight childhood cancer.

#### **Qualifications:**

- Community Volunteer
- Committed to the continued success and the great quality of life we enjoy in Roseville
- Local businessman – Owner A+ Personalized Dental Care since 1993
- Named Roseville Chamber's Business Person of the Year 2009
- President Roseville Chamber of Commerce 2004

#### **Service to the community:**

- Member of Roseville Parks and Recreation Commission since 2001
- Member of Roseville Sustainability Action Plan Committee
- President of Woodcreek Seawolves Recreational Swim Team
- Member of Roseville High School Districts Continuous Improvement Leadership Team (CLIT) 2002-2006
- Member of Roseville Youth Sports Coalition

#### **Goals:**

- Continue our mutually beneficial partnership between our outstanding parks and schools
- Provide a new perspective to solving difficult economic and community challenges
- To be accessible and always willing to listen, help and concentrate on your concerns and needs
- Implement an economic development plan to diversify the city's economic base

#### **Why I want to be on the City Council:**

- Give back to the city in which I have enjoyed raising our daughter, living, working and playing
- Help the City make sound decisions and plan for our future
- Grow and diversify our local economy – to continue to bring jobs and commerce to our community

#### **Personal:**

- Married to Pam since 1983; 18-year resident of Roseville, daughter Joceline graduated from UCLA, June 2010
- Enjoys running, water skiing, and community involvement
- Received Doctor of Dental Surgery degree from UCSF, School of Dentistry, June 1988
- Worked and/or owned dental practice in Roseville since 1989